



NAVIGATOR



MARKS THE SPOT OF EFFICIENCY.



## NAVIGATOR RIP 8 NEW FEATURES AND OPTIONS

### Navigator RIP 8 Features & Benefits

- **Harlequin 8 RIP core**  
Latest RIP core with enhanced transparency support
- **Native PDF 1.7 Support**  
Accept files from the latest layout and design programs
- **Native XPS Support**  
Supports XPS 1.0 standard
- **Navigator PDF Soft Proofing Plug-in (option)**  
Soft proofing of RIPed bitmap in PDF format
- **Try Before You Buy**  
Evaluate suitability of select features before purchase
- **Enhanced user interface (option)**  
An enhanced user interface providing even more RIP feedback at the prepress workstation is available with Navigator RIP Manager option. Optional PDF Tools provide integrated PDF creation and preflighting within the workflow.

### Navigator RIP 8 Details

#### Harlequin 8 RIP core

Providing enhanced support for transparency handling, the Navigator 8 RIP includes the latest Harlequin RIP core from Global Graphics Software.

#### Native PDF 1.7 Support

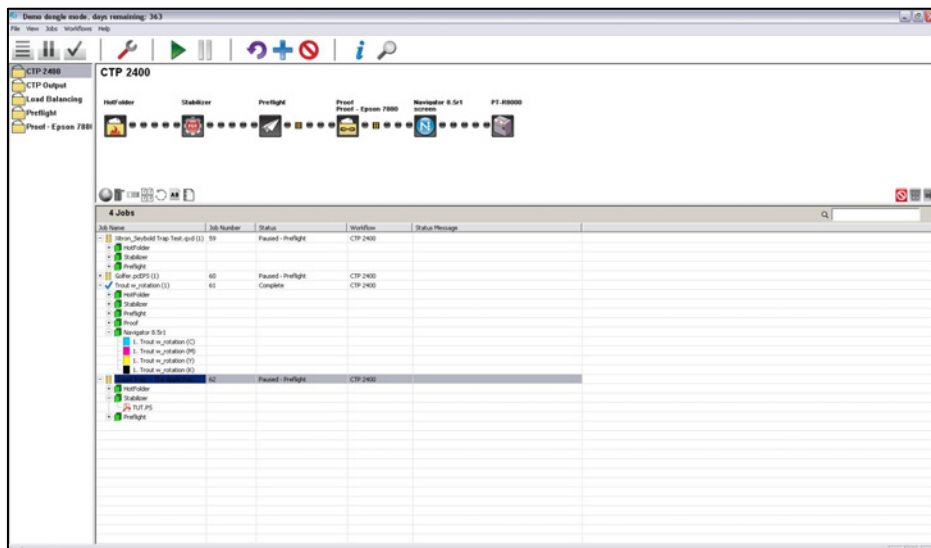
This capability means that users will be able to handle files from more front-end and design applications including Acrobat 7/8 PDFs that are PDF 1.7 compliant.

#### Native XPS 1.0 Support

Native support for Microsoft's XPS page description language output found in many of the latest Windows programs.

#### Navigator PDF Soft Proofing Plug-in (option)

The Navigator PDF Soft Proofing Plug-in provides users the ability to generate a CMYK PDF soft proof of the job once it has been RIPed. The plug-in creates a low resolution CMYK PDF file that can be easily viewed with standard PDF viewers.



User interface of Navigator RIP Manager workflow option for Navigator v8 RIPs.

## Other Features

### Font Emulation

Font emulation is ideal for time critical applications, such as Print on Demand (digital production with appropriate character spacing, weight and width.

### Improved Color Management (optional ColorPro)

Navigator offers improved color rendition in overprinting profiles.

### Color Proofing Plug-in

Adding a proofing plug-in to your existing Navigator RIP helps ensure data integrity by using the same RIP to drive your imagesetter and your proofing device. Xitron provides support for a wide array of proofing devices including the most popular from Epson®, Canon® and others.

### Try Before You Buy

Try Before You Buy provides the opportunity to test drive some of the most popular Navigator GPS options. Included are Simple Imposition, TrapPro, HSD, CIP3, ColorPro and plug-ins for Canon and Epson proofing printers.

### Job Performance Improvements

Increases in performance have been incorporated into many functions of the RIP. One such increase will be found in jobs with color management under ColorPro. The speed is enhanced by caching the color management information resulting in less processing time to render a job. Actual performance increases are job and system specific.

### Enhanced Device Support

Xitron is constantly adding to its list of support output devices. A Universal Windows Printer plug-in supports many desktop laser printers and multi-function devices commonly found in use at printers. This plug-in enhances the ability to use these devices as adjuncts to the prepress workflow for text and concept proofing.

### RIP Manager Control (optional)

Upgrade your Navigator RIP to a complete Navigator GPS workflow solution with the addition of Navigator RIP Manager. This powerful workflow option includes increased control of the RIP to the desktop, further reducing the need for specific page setups.

RIP Manager provides the ability to select imposition schemes, trap sets, image rotation, color separation sets and page features. Output device icons allow users to more easily determine the output device in use for a specific workflow. The icon will automatically be displayed based on the device chosen in the Page Setup.

Enhanced searching functionality makes locating jobs a breeze for users who have a large daily volume or who retain frequently run jobs on file.

The PDF Tools option offers integrated PDF creation and preflighting within the RIP Manager workflow further boosting capability and productivity of a Navigator workflow solution.

## Contact

For more details about Xitron product offerings or how you can upgrade your existing Xitron Navigator RIP to the latest Navigator GPS with RIP Manager, contact a Xitron Dealer or email Xitron at [xitronsales@xitron.com](mailto:xitronsales@xitron.com) or call 734-913-8080.



**YOUR BUSINESS. OUR DRIVE.**

#### GROUP HEADQUARTERS

781 AVIS DRIVE, STE. 200  
ANN ARBOR, MICHIGAN 48108  
MAIN: 734.913.8080  
FAX: 734.913.8088  
[XITRONSALES@XITRON.COM](mailto:XITRONSALES@XITRON.COM)